

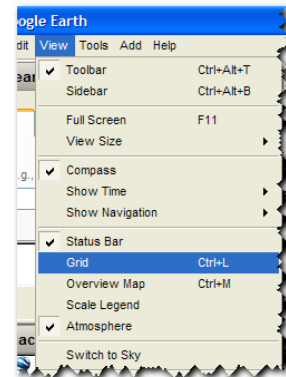
Using Sky in Google Earth

Google Earth version 4.2 or higher required.

Sky gives users a view of stars, constellations, galaxies, planets and the Earth's moon.

To use Sky, click on the icon to switch between Earth and Sky.

Or from the menu: View>Switch to Sky.



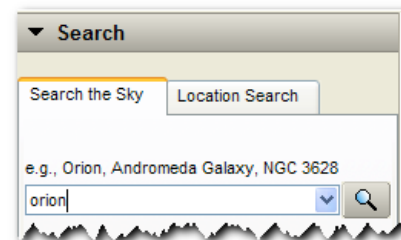
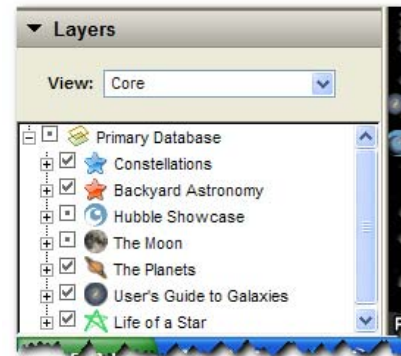
When using Sky, your view shows what is immediately above your location in Google Earth at that moment. When you switch back to Google Earth, you return to the same location.

When you open Sky, you will be able to see stars as well as information contained in the Layers panel. You can click on various layers to view or hide information.

Click on a point of interest to find out more about an object.

Placemarks that are checked in your My Places will appear in the sky; uncheck their box and they will disappear.

To search the sky, type in the name of the object you wish to see.



To display a grid of longitude and latitude, go to View>Grid.

